

## INSTRUMENTOS PARA ORTOPEDIA

*Orthopaedic Instruments*  
*Instruments pour l'orthopédie*  
*Instrumentos para ortopedia*

w w w . l a m e d i c a l . p t





**Volkman**

Referência Reference Référence Referencia	Características Features Fonctionnalités Características	
M 502005	8 dentes afiados <i>sharp teeth / dents pointues / dientes afilados</i>	
	24cm 9½" comprimento <i>length / longueur / largo</i>	
M 502004	6 dentes rombos <i>blunt teeth / dents émoussées / dientes romos</i>	
	22cm 8¾" comprimento <i>length / longueur / largo</i>	



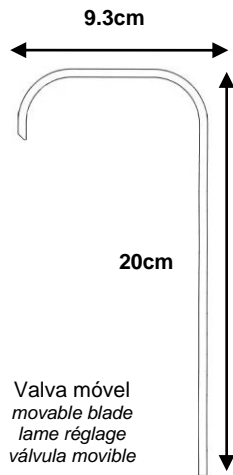
**Gancho**  
**M 502050**  
22cm 8¾"



**Langenbeck**  
**M 505316**  
80x45mm  
25cm compr. / length



**Charnley**  
**M 506346**

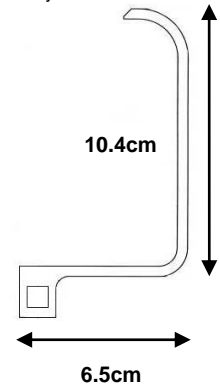


Valva móvel  
movable blade  
lame réglage  
válvula movable



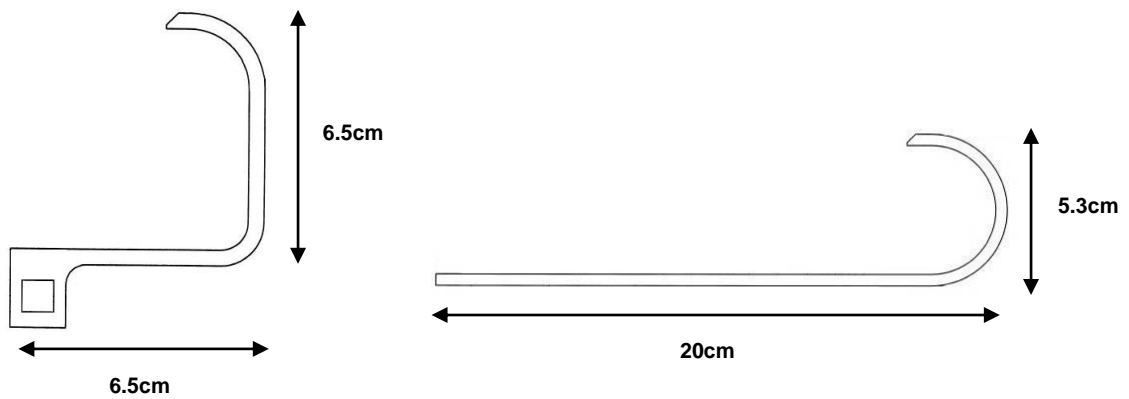
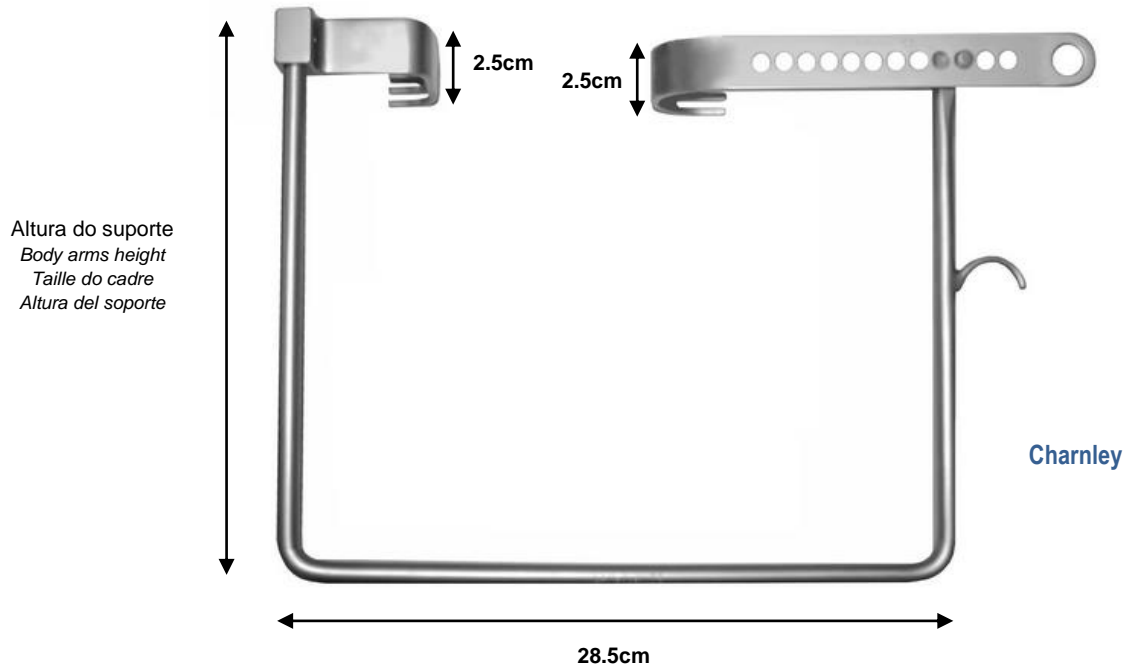
**Charnley**  
**M 506348**

Valva fixa  
fixed blade  
lame fixe  
válvula fija

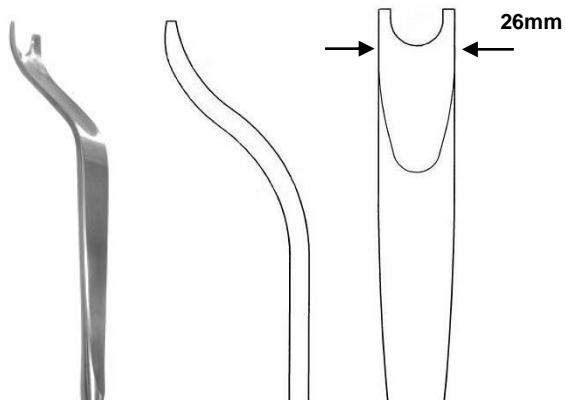


**Charnley**

Referência Reference Référence Referencia	Peso Weight Poids peso
M 506352	1.5Kgs
M 506354	1.3Kgs



Referência Reference Référence Referencia	Características Features Fonctionnalités Características	Altura do suporte Body arms height Taille do cadre Altura del soporte
M 506350	Completo com valva móvel + valva fixa + suporte Complete with movable blade + fixed blade + body arms Complet avec lame réglable + lame fixe + cadre Completo com válvula movible + válvula fija + soporte	24cm
M 506351	Completo com valva móvel + valva fixa + suporte Complete with movable blade + fixed blade + body arms Complet avec lame réglable + lame fixe + cadre Completo com válvula movible + válvula fija + soporte	17.5cm
M 506349	Apenas o suporte Only the body arms Just le cadre Solo el soporte	24cm



**Femoral**  
**M 505300**  
33cm 12¾"

Com orifício para peso  
With hole for weight  
Avec trou pour poids  
Con agujero para peso



**M 505302**  
1Kg

Peso para afastador femoral  
Weight for femoral retractor  
Poids pour écarteur femoral  
Peso para retractor femoral

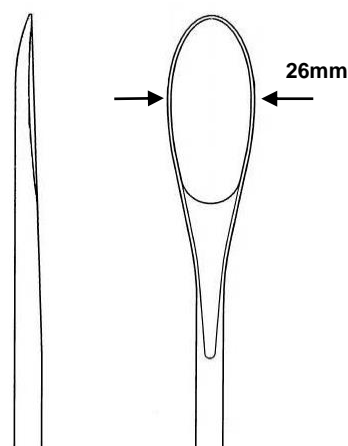


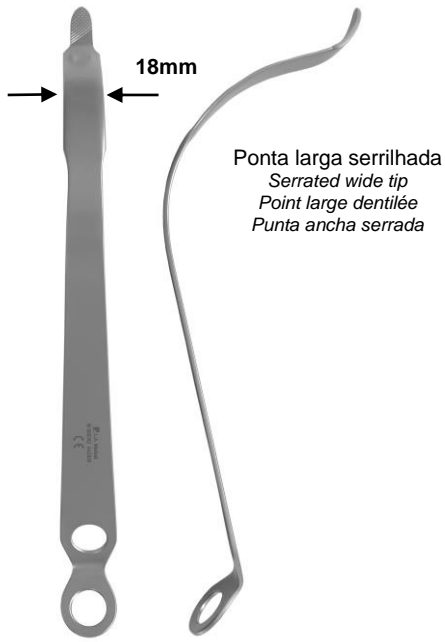
**M 505304**

Gancho para peso e afastador femoral  
Hook for weight and femoral retractor  
Crochet pour poids et écarteur femoral  
Gancho de peso y retractor femoral

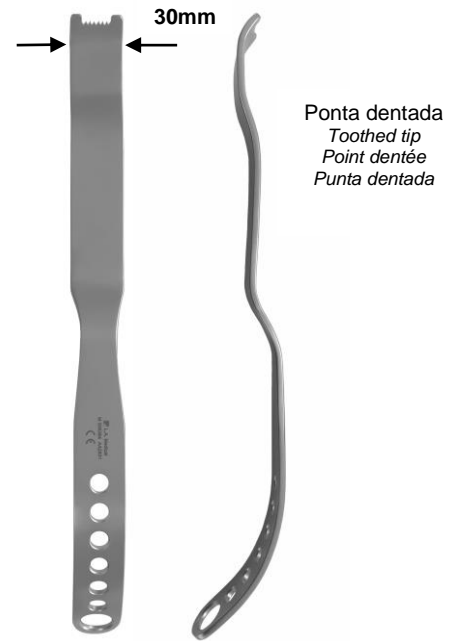


**Separador**  
**M 505306**  
32cm 12½"

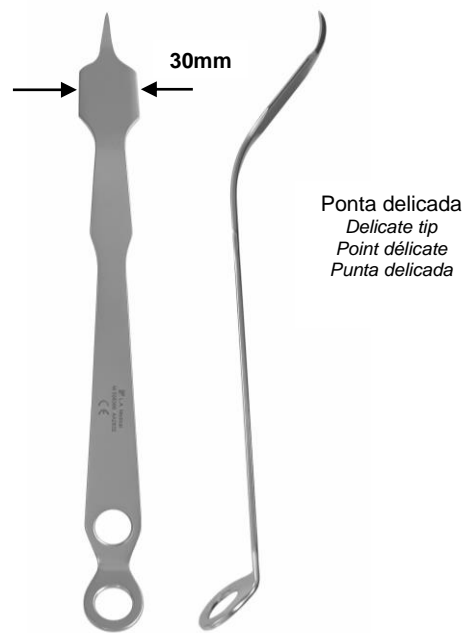




**CMI**  
**M 506362**  
28cm 11"



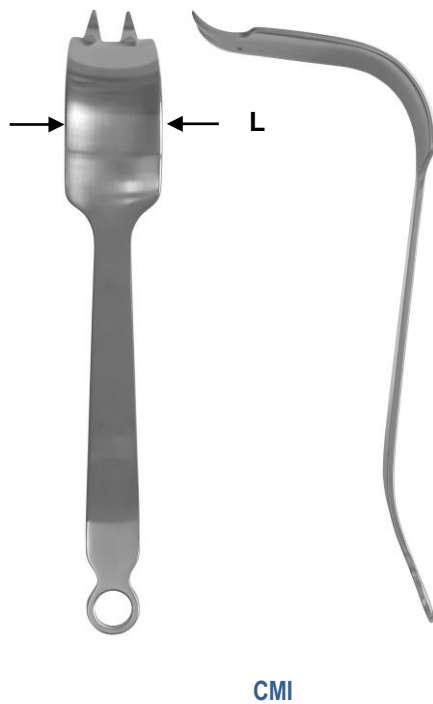
**CMI**  
**M 506364**  
35.5cm 14"



**CMI**  
**M 506366**  
29cm 11½"

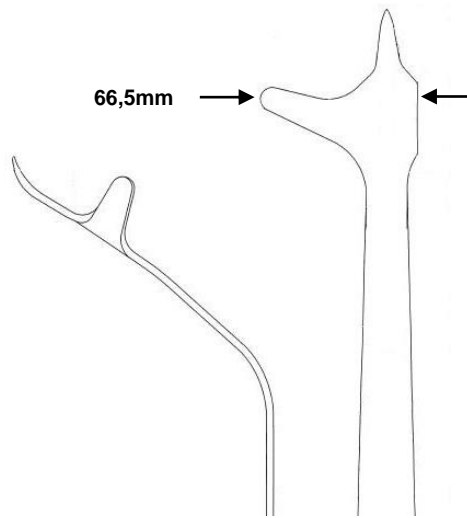


Referência Reference Référence Referencia	L	Comprimento Length Longueur Largo
M 506368	15mm	27cm 10¾"
M 506370	30mm	27cm 10¾"

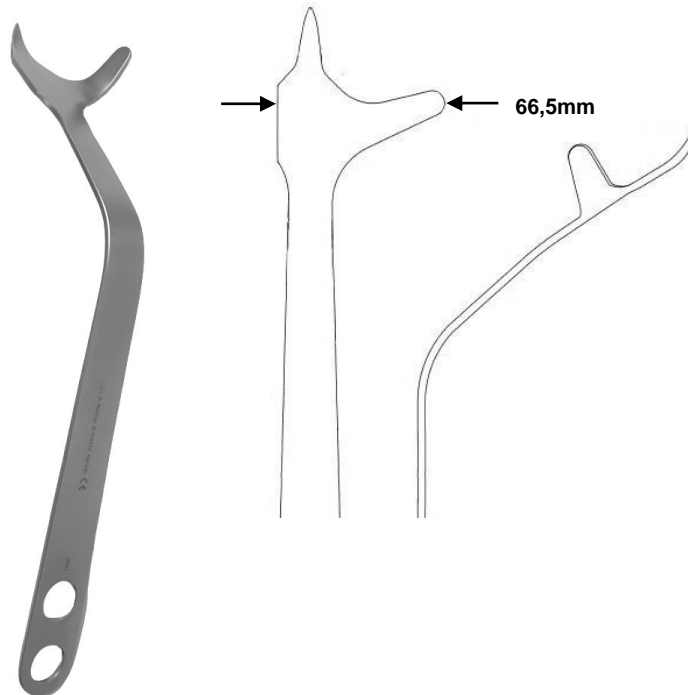


Referência Reference Référence Referencia	Dentes Teeth Dents Dientes	L	Comprimento Length Longueur Largo
M 506384	2	46mm	34cm 13½"
M 506386	1	38mm	33cm 13"





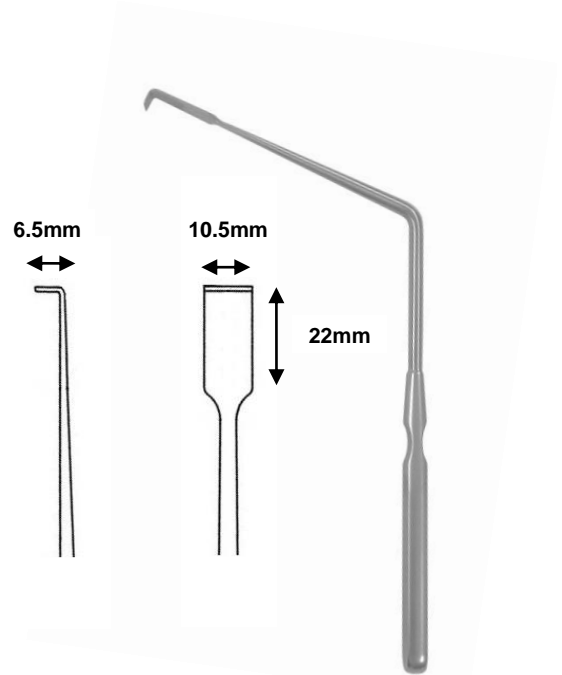
**CMI**  
**M 506372**  
30cm 11<sup>3</sup>/<sub>4</sub>"



**CMI**  
**M 506374**  
30cm 11<sup>3</sup>/<sub>4</sub>"

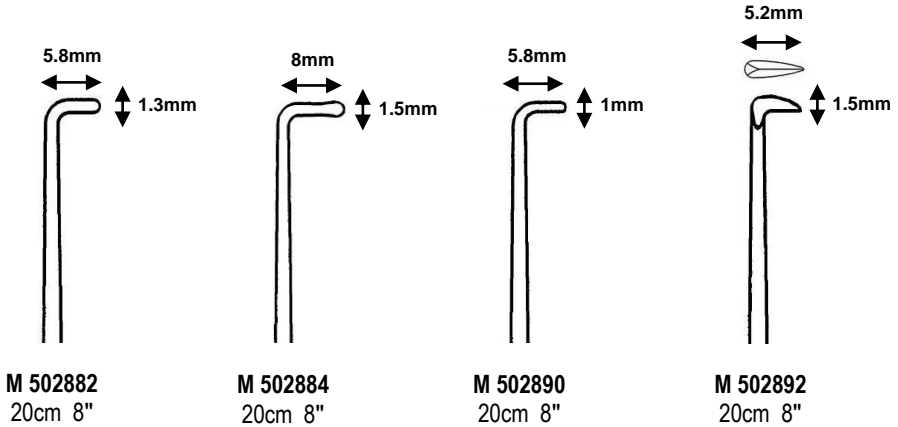


**Freeman**



**Scoville**  
**M 502874**  
**20.5cm 8"**

Referência Reference Référence Referencia	Ponta End Pointe Punta	Comprimento Length Longueur Longitud
M 502054	cônica conical conique cônica	10cm 4"
M 502056	roscada threaded filetée roscada	15.5cm 6¼"

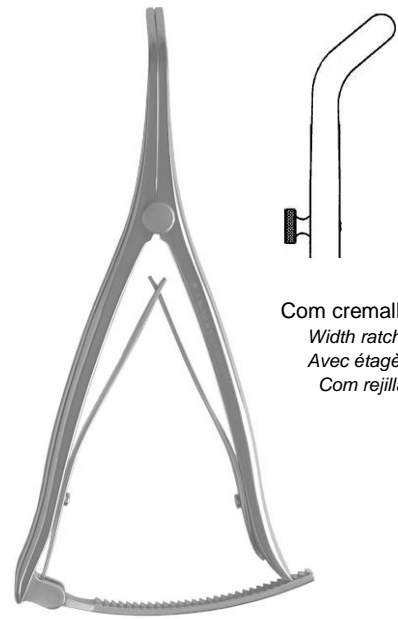


**M 502882** 20cm 8"  
**M 502884** 20cm 8"  
**M 502890** 20cm 8"  
**M 502892** 20cm 8"

**Gancho palpador**

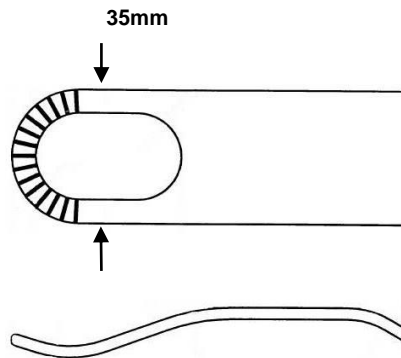


**Afastador em "U"**  
**M 504035**  
30cm 11¾"

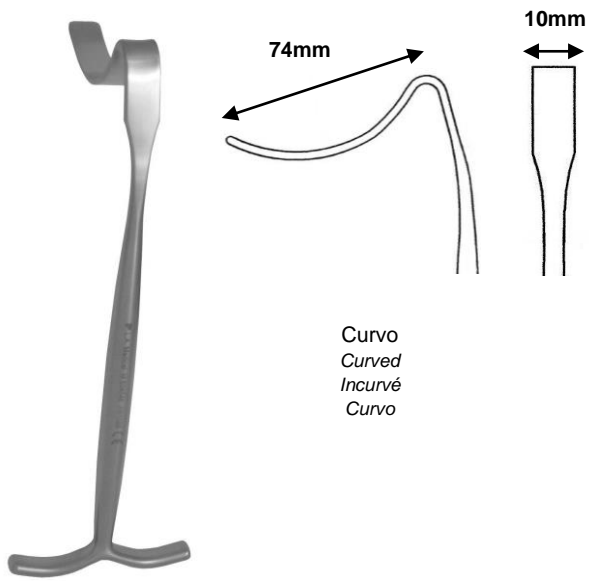


Com cremalheira  
Width ratchet  
Avec étagère  
Com rejilla

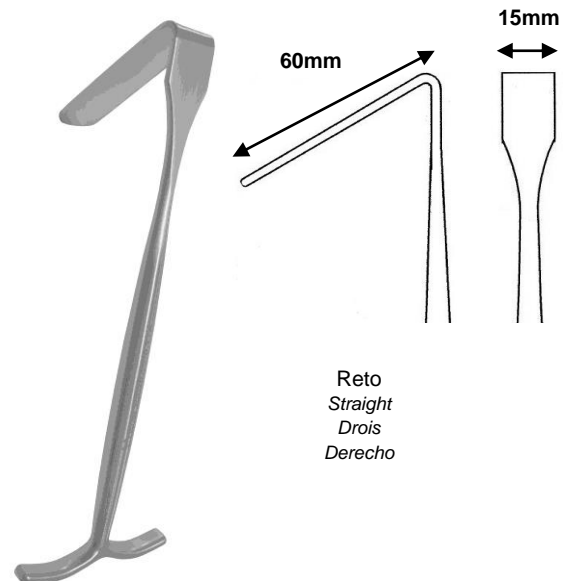
**Femoral**  
**M 504528**  
20cm 8"



**Fukuda**  
**M 502860**  
22.5cm 8¾"



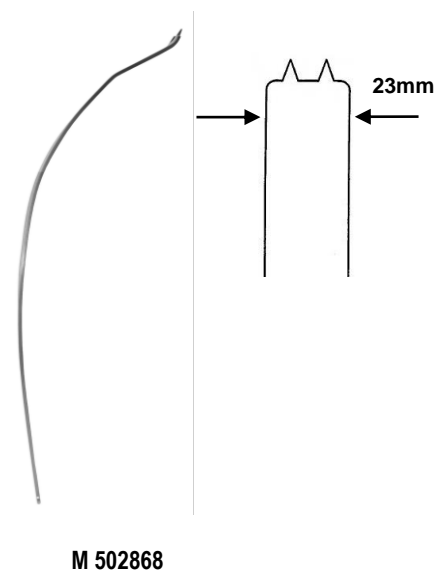
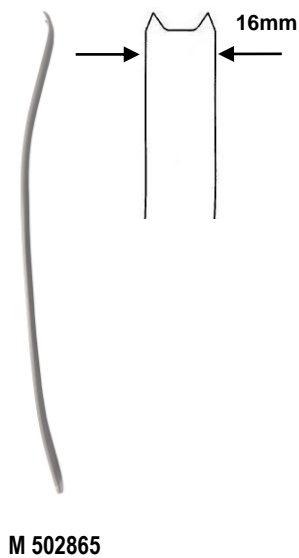
**Smiling**  
M 504546  
17.5cm 7"



**Smiling**  
M 504548  
17.5cm 7"



**Kolbel**  
30cm 11¾"



Referência Reference Référence Referencia	Características Features Fonctionnalités Características	
M 502006	Ponta afiada <i>sharp tip / pointe pointue / punta afilada</i>	
	18mm largura <i>width / larger / ancho</i>	
	23.5cm 9¼" comprimento <i>length / longueur / largo</i>	
M 502007	Ponta romba <i>blunt tip / pointe émoussée / punta desafilada</i>	
	18mm largura <i>width / larger / ancho</i>	
	24cm 9½" comprimento <i>length / longueur / largo</i>	
M 502016	Ponta quadrada <i>square tip / pointe carré / punta cuadrada</i>	
	18mm largura <i>width / larger / ancho</i>	
	22cm 8¾" comprimento <i>length / longueur / largo</i>	

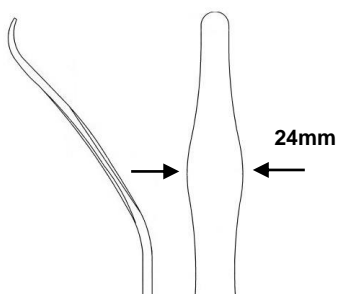


**Hohmann**



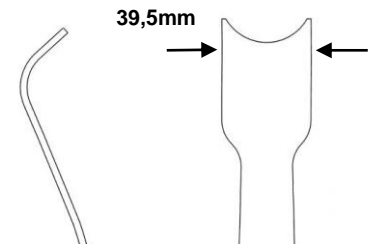
**Hohmann**

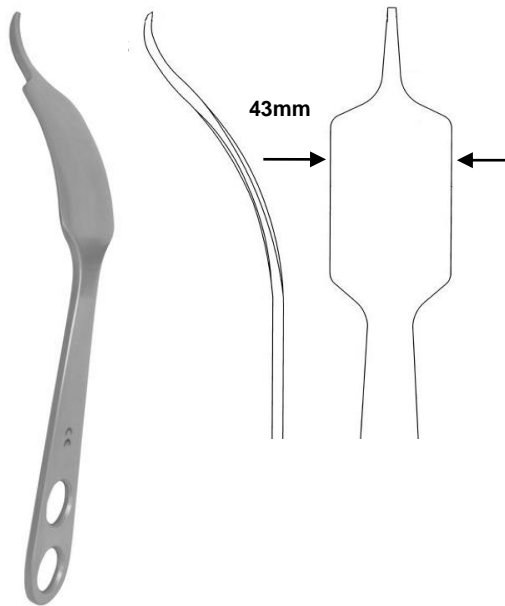
**M 502008**  
23.5cm 9¼"



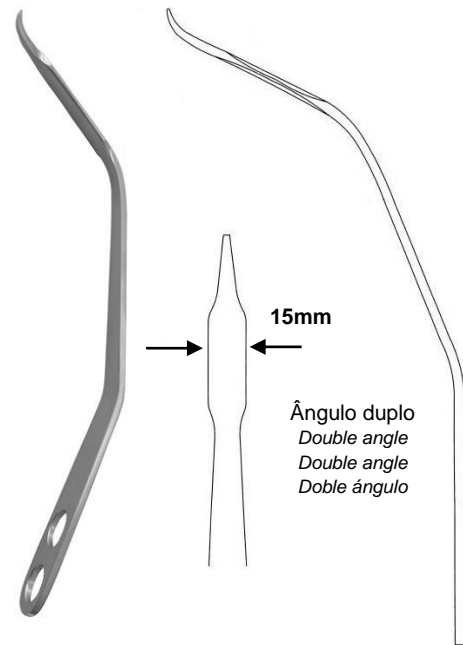
**Colo do fémur**

**M 502010**  
32cm 12½"

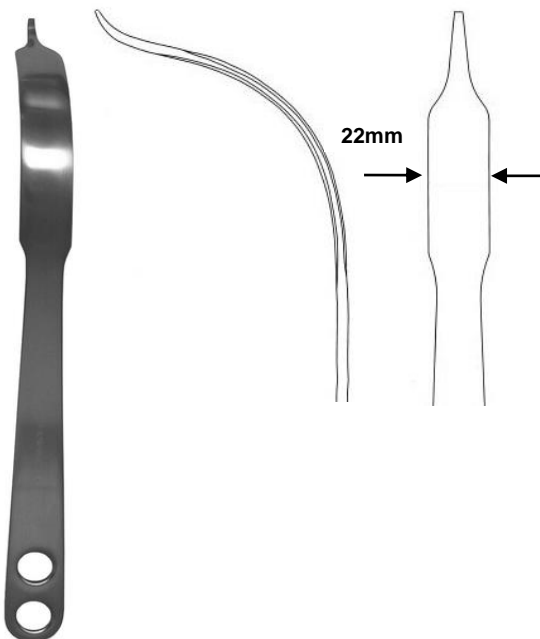




**Hohmann**  
**M 502012**  
23.5cm 9¼"



**Hohmann**  
**M 502020**  
26cm 10¼"



**Femoral**  
**M 502022**  
29.5cm 11¾"

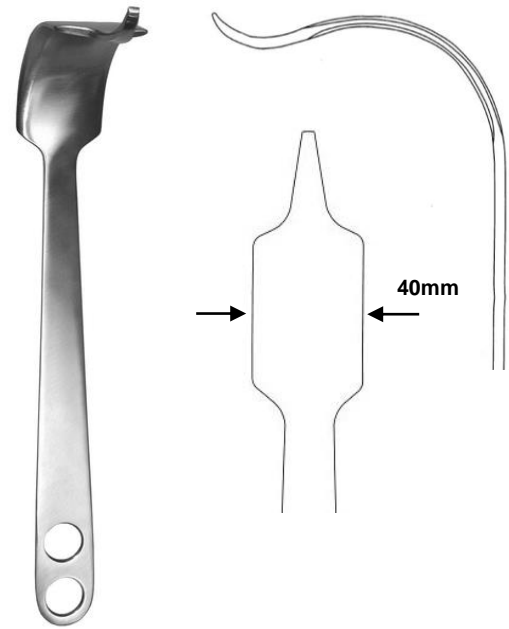


**Trocânter**  
**M 502023**  
29cm 11¼"

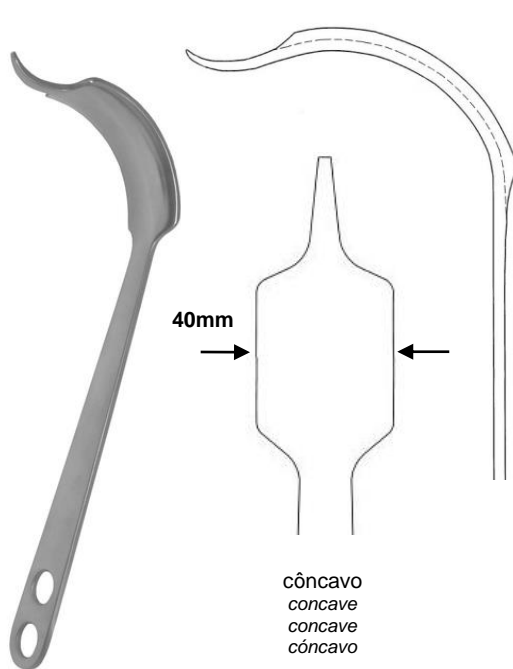


Côncavo e com orifício de inserção  
Concave and with insertion hole  
Concave et avec trou d'insertion  
Côncavo y con orificio de inserción

**Troçãter**  
**M 502024**  
30cm 11¾"

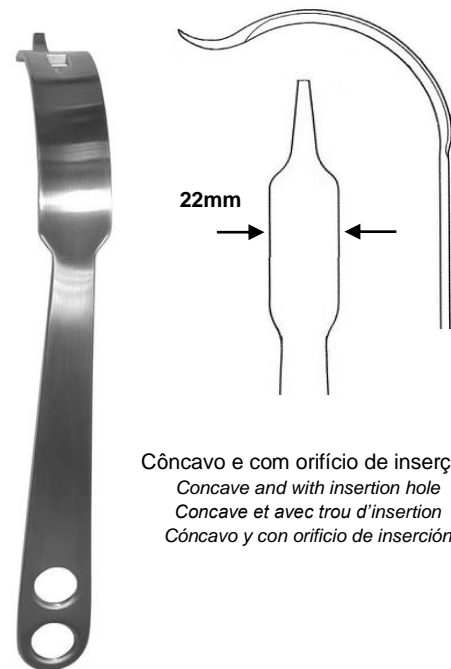


**Hohmann**  
**M 502026**  
29cm 11¼"



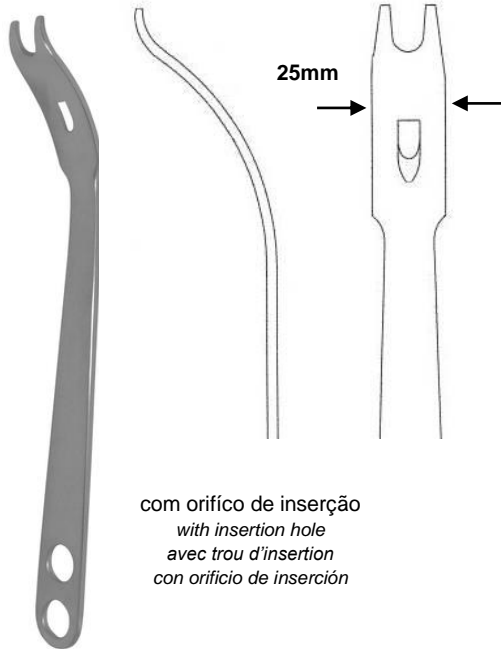
côncavo  
concave  
concave  
côncavo

**Hohmann**  
**M 502027**  
29cm 11¼"



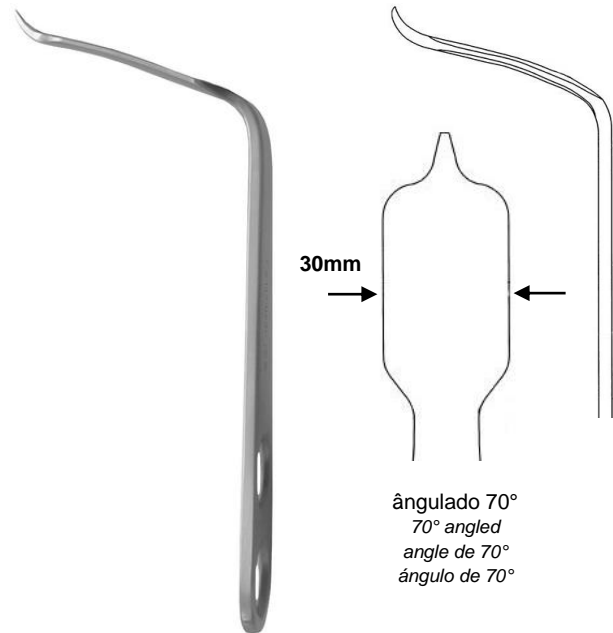
Côncavo e com orifício de inserção  
Concave and with insertion hole  
Concave et avec trou d'insertion  
Côncavo y con orificio de inserción

**M 502028**  
26cm compr. / length



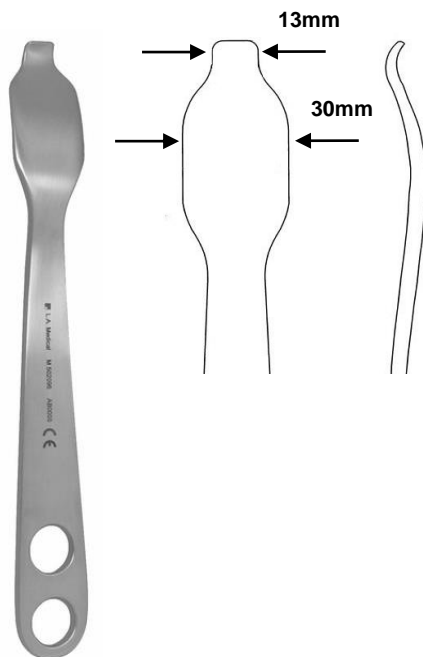
com orifício de inserção  
with insertion hole  
avec trou d'insertion  
con orificio de inserción

**Hohmann**  
**M 502029**  
30cm 11¾"

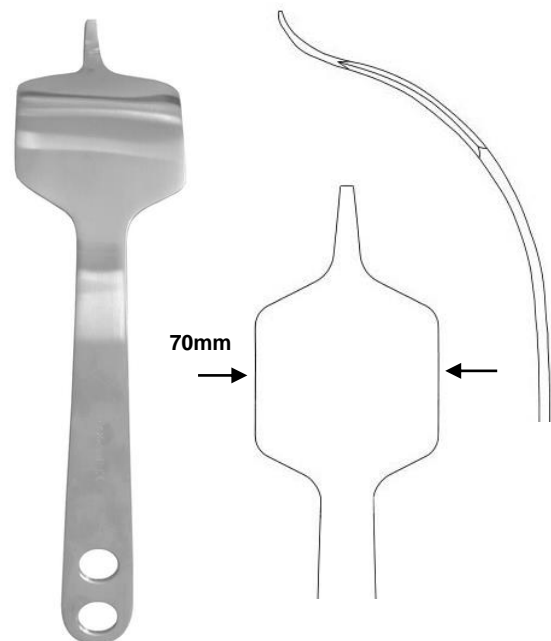


ângulado 70°  
70° angled  
angle de 70°  
ángulo de 70°

**Hohmann**  
**M 502090**  
16.5cm 6½"



**Úmero**  
**M 502096**  
23.5cm 9¼"

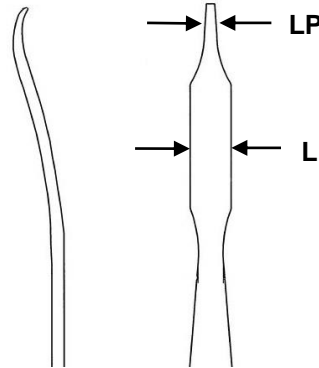


**Hohmann**  
**M 502100**  
27cm 10¾"

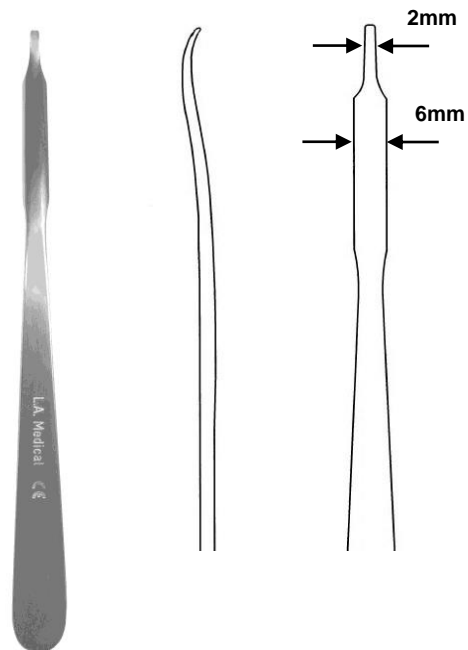




**Hohmann**



Referência Référence Référence Referencia	LP	L	Comprimento Length Longueur Largo
M 502102	2mm	10mm	22,5cm 8¾"
M 502103	3mm	10mm	22cm 9"



**Hohmann**  
**M 502110**  
16cm 6¼"



Ponta em forma de faca  
*Knife-shaped tip*  
*Pointe en forme de couteau*  
*Punta en forma de cuchillo*

Referência <i>Reference</i> <i>Référence</i> <i>Referencia</i>	Ø	Comprimento <i>Length</i> <i>Longueur</i> <i>Longitud</i>
M 506432	3,2mm	17,4cm 6¾"
M 506433	4,0mm	17,5cm 6¾"
M 506434	5,0mm	17,6cm 7"
M 506435	6,0mm	17.7cm 7"



Referência Reference Référence Referencia	Rosca Thread Fil Rosca	Ø
M 502181	M10x1.5	Ø32mm
M 502194	3/8-24	Ø28mm
M 502216	M10x1.5	Ø28mm
M 502372	M8	Ø36mm



Referência Reference Référence Referencia	Rosca Thread Fil Rosca	Ø
M 502186	1/4-20	Ø28mm
M 502187	1/4-20	Ø32mm
M 502373	M10x1	Ø32mm
M 502374	M10x1.5	Ø32mm
M 502375	M10x1.5	Ø28mm



Referência Reference Référence Referencia	Rosca Thread Fil Rosca	Ø	Espessura Depth Épaisseur Grosor
M 502162	M10x1.5	Ø32mm	16mm
M 502164	1/4-20	Ø32mm	16mm
M 502192	M10x1.5	Ø28mm	15.5mm
M 502199	M10x1.5	Ø32mm	17.5mm



Aço inoxidável  
Sainless steel  
Acier inoxydable  
Acero inoxidable

Referência Reference Référence Referencia	Rosca Thread Fil Rosca	Ø	Espessura Depth Épaisseur Grosor
M 502195	M10x1.5	Ø28mm	12mm
M 502198	1/4-20	Ø28mm	12mm



Referência Reference Référence Referencia	Tipo Type Taper Tipo	Tamanho Size Talle Talla
M 502178	Femoral	65x38mm
M 502179	Tibial	51.5x25.5mm



Referência Reference Référence Referencia	Rosca Thread Fil Rosca	Ø
M 502289	M10x1.5	Ø32mm
M 502294	M10x1.5	Ø28mm



Aço inoxidável  
Sainless steel  
Acier inoxydable  
Acero inoxidable



com 2 parafusos M5x12mm  
with 2 screws M5x12mm  
avec deux vis M5x12mm  
con dos tornillos M5x12mm

Referência Reference Référence Referencia	Rosca Thread Fil Rosca	Ø
M 502316	M10x1.5	Ø26.7mm
M 502317	M10x1.5	Ø28mm
M 502319	M10x1.5	Ø32mm

Referência Reference Référence Referencia	Tipo Type Taper Tipo	Tamanho Size Talle Talla
M 502330	Femoral	63.5x42mm



Referência Reference Référence Referencia	Rosca Thread Fil Rosca	Tipo Type Taper Tipo	Tamanho Size Talle Talla
M 502332	9/16-20	Femoral	65x38mm

Referência Reference Référence Referencia	Rosca Thread Fil Rosca	Ø
M 502369	M10x1.5	Ø25mm



com base metálica  
with metal base  
avec base métallique  
con base metálica

Referência Reference Référence Referencia	Ø	Material cabeça Head material Matériau tête Material cabeza	Rosca Thread Fil Rosca
M 502377	Ø28mm	POM Azul Blue / Bleu / Azul	M10x1
M 502378	Ø32mm	POM Azul Blue / Bleu / Azul	M10x1
M 502379	Ø36mm	POM Azul Blue / Bleu / Azul	M10x1
M 502413	Ø28mm	POM preto Black / Noir / Negro	M10x1.5
M 502414	Ø32mm	POM preto Black / Noir / Negro	M10x1.5
M 502415	Ø36mm	POM preto Black / Noir / Negro	M10x1.5
M 502416	Ø40mm	POM preto Black / Noir / Negro	M10x1.5



**M 502067**  
20cm 8"



**Cardan**  
**M 502206**  
35.5cm 14"

com cabo AO  
with AO handle  
avec câble AO  
con cable AO



Referência Reference Référence Referencia		Comprimento Length Longueur Largo
M 502290	4.0mm	35cm 14"
M 502292	2.5mm	35cm 14"
M 507102	3.5mm	23.5cm 9¼"

com cabo AO  
with AO handle  
avec câble AO  
con cable AO



**M 506014**  
12cm 4¾"

encaixe AO  
AO fitting  
AO raccord  
AO encaje



13x9mm

**M 502033**  
27.5cm 10 3/4"



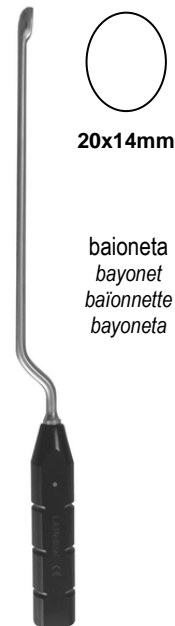
serrilhada  
serrated  
dentelée  
dentada

Referência Reference Référence Referencia	Ponta Tip Point Punta	Comprimento Length Longueur Largo
M 502034	13x9mm	27.5cm 10 3/4"
M 502035	18x12mm	27.5cm 10 3/4"
M 502036	18x14mm	27.5cm 10 3/4"



20x10mm

**M 502037**  
35cm 14"



20x14mm

baioneta  
bayonet  
baionnette  
bayoneta

**M 503024**  
42.5cm 16 3/4"

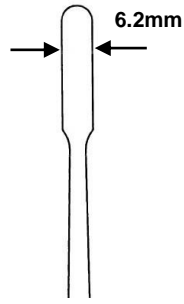


**Charnley**  
**M 502782**  
38.5cm 15¼"

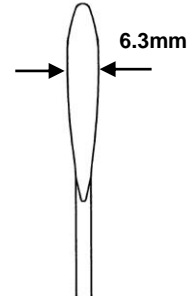


**M 503026**  
30cm 11¾"

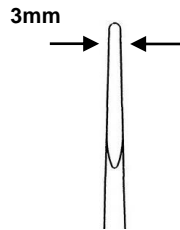




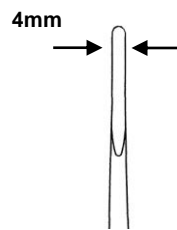
**M 502810**  
18.5cm 7"



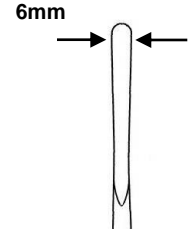
**M 502894**  
23.5cm 9¼"



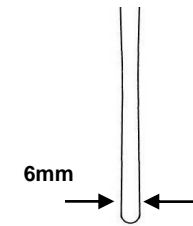
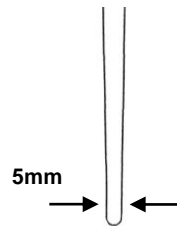
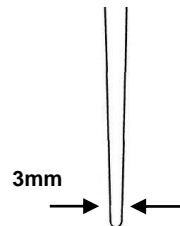
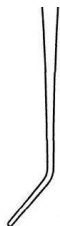
**M 502876**  
32.5cm 12¾"



**M 502878**  
32.5cm 12¾"



**M 502880**  
32.5cm 12¾"





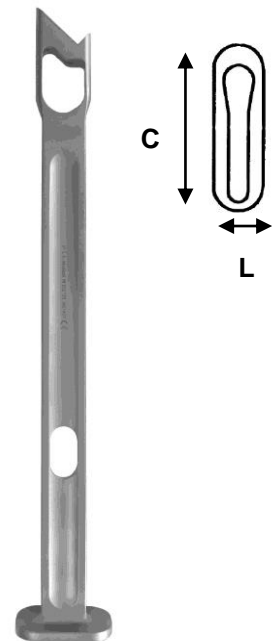
**M 502040**  
32cm 12½"



**M 502044**  
32cm 12½"



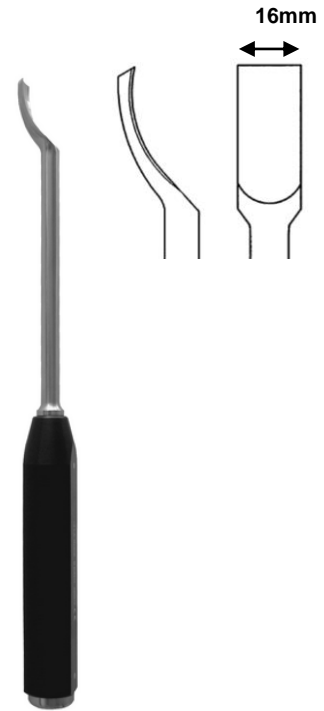
Referência Reference Référence Referencia	Largura Width Largeur Ancho	Ø	Comprimento Length Longueur Largo
M 502116	7mm	4mm	8,5cm 3¼"
M 502118	8mm	4mm	8,5cm 3¼"



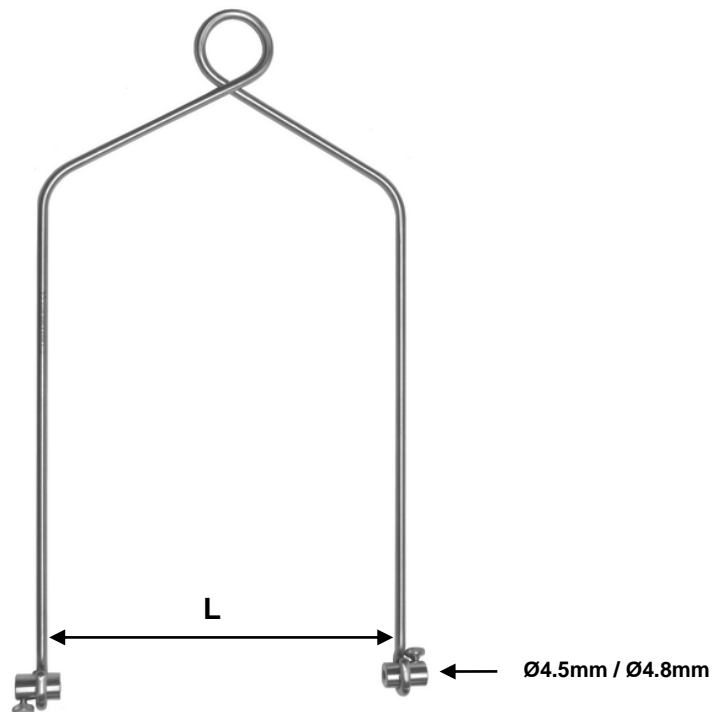
Referência Reference Référence Referencia	L	C	Comprimento Length Longueur Largo
M 502128	8,25mm	28mm	31cm 12¼"



**M 505308**  
32cm 12½"



**Pescoço de cisne**  
**M 505310**  
32cm 12½"



**Boehler**

Referência <i>Reference</i> <i>Référence</i> <i>Referencia</i>	Tamanho <i>Size</i> <i>Talle</i> <i>Talla</i>	L	Comprimento <i>Length</i> <i>Longueur</i> <i>Largo</i>
M 504002	Médio <i>Medium</i> <i>Moyen</i> <i>Medio</i>	12cm	22,5cm 8¾"
M 504004	Grande <i>Large</i> <i>Grand</i> <i>Grande</i>	16.5cm	31,5cm 12½"

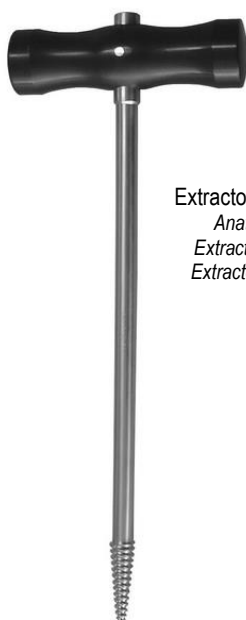


Encaixe  
Fit  
Proveé  
Encaje

Ø14.7mmx30mm

Extractor de hastes femorais  
*Femoral stem extractor*  
*Extracteur de tige fémorale*  
*Extractor de vástago femoral*

**M 502282**  
33.5cm 12¾"



Extractor de cabeças anatómicas  
*Anatomical heads extractor*  
*Extracteur de têtes anatomiques*  
*Extractor de cabezas anatómicas*

Referência <i>Reference</i> <i>Référence</i> <i>Referencia</i>	Cabo em POM <i>POM handle</i> <i>Poigné POM</i> <i>Mango de POM</i>	Comprimento <i>Length</i> <i>Longueur</i> <i>Largo</i>
M 502052	Preto Black Noir Negro	28cm 11"
M 502336	Azul Blue Bleu Azul	28cm 11"



Extractor de pinos Steinman  
*Steinmann pins extractor*  
Extracteur de épingles Steimann  
Extractor de alfileres Steimann

Referência <i>Reference</i> <i>Référence</i> <i>Referencia</i>	Ø Pino <i>Ø Pin</i> <i>Ø Goupilles</i> <i>Ø Pasadores</i>	Comprimento <i>Length</i> <i>Longueur</i> <i>Largo</i>
M 504016	3,2mm	14cm 5½"
M 504045	3,0mm	14cm 5½"



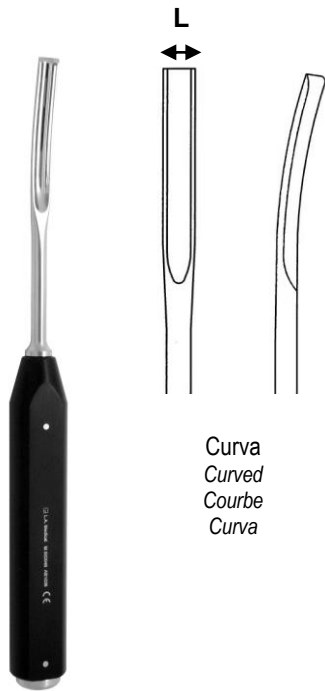
Com bola  
With ball  
Avec balle  
Con pelota



Sem bola  
Without ball  
Pas de balle  
Sin pelota

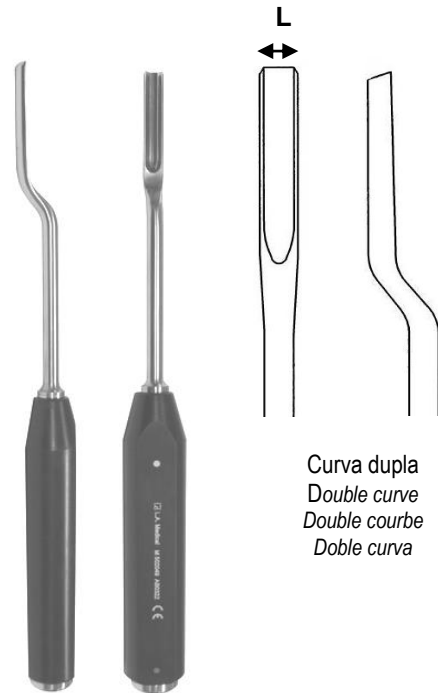
Referência Reference Référence Referencia	Características Characteristics Caractéristiques Características
M 502714	Ø2.0mm 100cm 40"
M 502724	Ø2.8mm 80cm 31½"

Referência Reference Référence Referencia	Características Characteristics Caractéristiques Características
M 502716	Ø2.0mm 100cm 40"
M 502718	Ø2.0mm 60cm 23¾"
M 502740	Ø2.2mm 80cm 31½"
M 502741	Ø2.2mm 60cm 23¾"
M 502742	Ø2.2mm 100cm 40"
M 502743	Ø2.8mm 60cm 23¾"
M 502744	Ø2.8mm 80cm 31½"
M 502746	Ø2.8mm 100cm 40"



Curva  
Curved  
Courbe  
Curva

Referência Reference Référence Referencia	L	Comprimento Length Longueur Largo
M 502046	10,5mm	32,5cm 12¾"
M 502047	12,5mm	32,5cm 12¾"



Curva dupla  
Double curve  
Double courbe  
Doble curva

Referência Reference Référence Referencia	L	Comprimento Length Longueur Largo
M 502049	9mm	31cm 12¼"



Referência Reference Référence Referencia	Largura Width Largeur Ancho	Ø	Comprimento Length Longueur Largo
M 502120	7,5mm	4mm	8cm 3¼"
M 502122	9mm	4mm	8cm 3¼"





Para cabeças  
*For heads*  
*Pour les têtes*  
*Para cabezas*

**M 502069**  
Ø18mm  
16cm 6¼"



← **M10x1.5**  
  
Para insertos  
*For heads*  
*Pour inserts*  
*Para insertos*

**M 502175**  
36.5cm compr. / length



Para acetábulos  
*For acetabulum*  
*Pour cotyle*  
*Para acetábulo*

**M 502200**  
Ø28mm  
22cm 8¾"



Orientador femoral  
*Femoral guide*  
*Guide femoral*  
*Guía femoral*

**M 502284**  
22cm 8¾"



Orientador femoral  
Femoral guide  
Guide femoral  
Guía femoral

**M 502285**  
22cm 8¾"



Orientador femoral  
Femoral guide  
Guide femoral  
Guía femoral

Referência Reference Référence Referencia	Ponta Tip Pointe Punta	Comprimento Length Longueur Largo
M 502333	11,9x3,9mm	22cm 8¾"
M 502334	6,6x3,1mm	24,5cm 9¾"



Para insertos  
For heads  
Pour inserts  
Para insertos

**M 505312**  
29cm 11¾"



Serrilhada  
Serrated  
Cranté  
Serrado

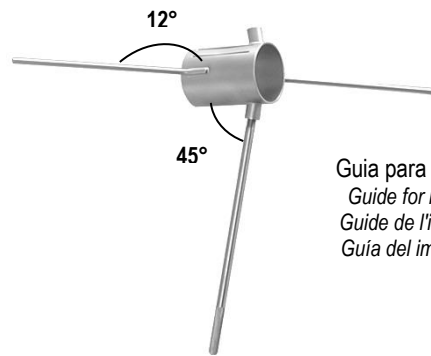
Para insertos  
For heads  
Pour inserts  
Para insertos

**M 505313**  
31.5cm 12½"



Para cabeças  
For heads  
Pour les têtes  
Para cabezas

**M 505320**  
24cm 9½"



Guia para impactor  
Guide for impactor  
Guide de l'impacteur  
Guía del impactador

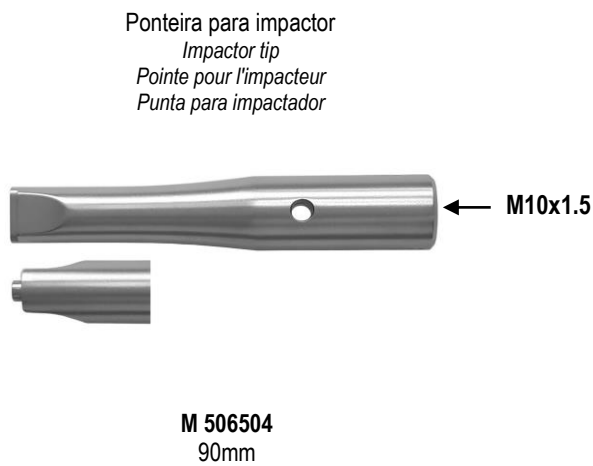
**M 502205**




Para acetábulos  
For acetabulum  
Pour cotyle  
Para acetábulo

Referência Reference Référence Referencia	Rosca Thread Fil Rosca
M 502072	3/8-24
M 502073	7/16-20
M 502165	5/16-24
M 502201	M10x1mm
M 502203	7/16-20
M 502204	M10x1.5mm

41cm 16"



Parafuso para impactor de cabeças  
Screw for heads impactor  
Vis pour impacteur de têtes  
Tomillo para impactador de cabezas

Referência Reference Référence Referencia	Rosca Thread Fil Rosca		Comprimento Length Longeur Largo
M 502173	1/4-28	3,5mm	19mm
M 502174	1/4-28	3,5mm	30mm



Posicionador de acetábulo  
*Acetabular positioner*  
*Positionneur de cotyle*  
*Posicionador de acetábulo*

Referência <i>Reference</i> <i>Référence</i> <i>Referencia</i>	Rosca <i>Thread</i> <i>Fil</i> <i>Rosca</i>	Ø
M 502176	M10x1.5	Ø28mm
M 502177	M10x1.5	Ø32mm



Extractor de componentes plásticos  
*Plastic components extractor*  
*Extracteur de composants en plastique*  
*Extractor de componentes de plástico*

**M 502208**  
23cm 9"



Cabeça para acetábulo  
*Acetabular head*  
*Tête à l'acétabulum*  
*Cabeza al acetábulo*

Referência <i>Reference</i> <i>Référence</i> <i>Referencia</i>	Rosca <i>Thread</i> <i>Fil</i> <i>Rosca</i>	Ø
M 502217	M10x1.5	Ø28mm



Punho para punção tibial  
*Tibial punch handle*  
*Poignet pour ponction tibiale*  
*Mango para puncción tibial*

Referência <i>Reference</i> <i>Référence</i> <i>Referencia</i>	Rosca <i>Thread</i> <i>Fil</i> <i>Rosca</i>	Comprimento <i>Length</i> <i>Longueur</i> <i>Largo</i>
M 502395	3/8-24	16cm 6¼"



Provas acetabulares  
*Acetabular reaming probes*  
*Tests acétabulaires*  
*Pruebas acetabulares*

<b>Referência</b> <i>Reference</i> <i>Référence</i> <i>Referencia</i>	<b>Ø</b>
M 502242	Ø42mm
M 502244	Ø44mm
M 502246	Ø46mm
M 502248	Ø48mm
M 502250	Ø50mm
M 502252	Ø52mm
M 502254	Ø54mm
M 502256	Ø56mm
M 502258	Ø58mm
M 502260	Ø60mm
M 502262	Ø62mm
M 502264	Ø64mm



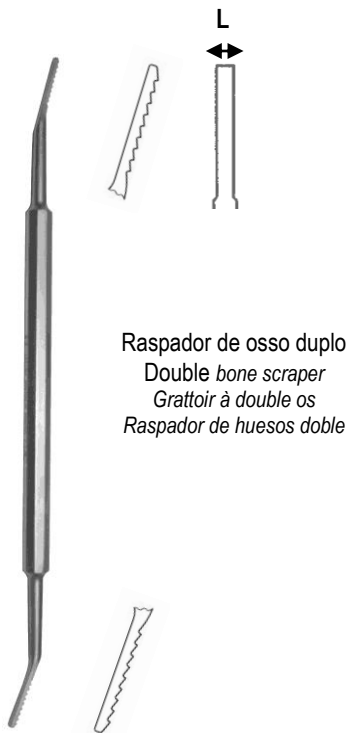
Raspador de osso  
Bone scraper  
Grattoir à os  
Raspador de huesos

Referência Reference Référence Referencia	L	Comprimento Length Longueur Largo
M 502800	4,3mm	16,5cm 6½"



Punho para lâmina BB  
Handle for BB blade  
Poignée de lame BB  
Mango para lâmina BB

Referência Reference Référence Referencia	Comprimento Length Longueur Largo
M 502802	10cm 4"



Raspador de osso duplo  
Double bone scraper  
Grattoir à double os  
Raspador de huesos doble

Referência Reference Référence Referencia	L	Comprimento Length Longueur Largo
M 502804	1,5mm	21cm 8¼"
M 502806	3mm	21cm 8¼"



Elevador e raspador de osso  
Bone elevator and scraper  
Lève-os et grattoir  
Raspador y elevador de huesos

Referência Reference Référence Referencia	L1	L2	Comprimento Length Longueur Largo
M 502808	6mm	4,3mm	22,5cm 8¾"



Cortador com aferidor  
*Knee-cap cutter with gauge*  
*Cutter avec jauge*  
*Cortador con calibre*

**M 504510**  
29.5cm 11½"



Fixador e furador com 3 furos  
*Knee-cap fixator and drill guide with 3 holes*  
*Fixateur et poinçon à 3 trous*  
*Fijador y punzón con 3 agujeros*

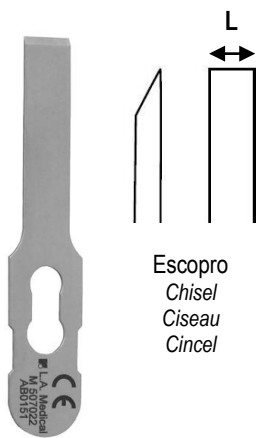
**M 504512**



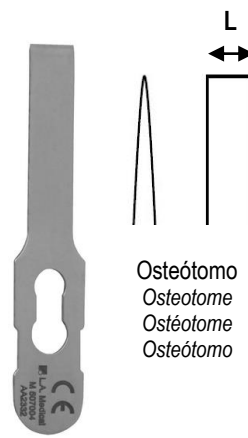


Cabo  
Handle  
Poigné  
Mango

**M 503060**  
20cm 8"



Escopro  
Chisel  
Ciseau  
Cincel



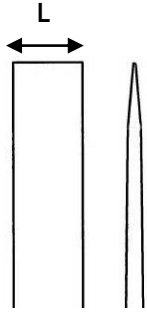
Osteótomo  
Osteotome  
Ostéotome  
Osteótomo

Referência Reference Référence Referencia	L
M 507020	5mm largura / width 45mm compr. / length
M 507022	10mm largura / width 45mm compr. / length
M 507024	16mm largura / width 45m compr. / length
M 507026	25mm largura / width 45mm compr. / length

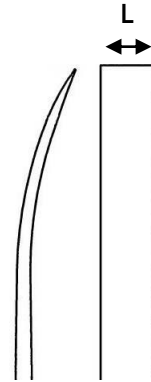
Referência Reference Référence Referencia	L
M 507002	5mm largura / width 45mm compr. / length
M 507004	10mm largura / width 45mm compr. / length
M 507006	16mm largura / width 45mm compr. / length
M 507008	25mm largura / width 45mm compr. / length



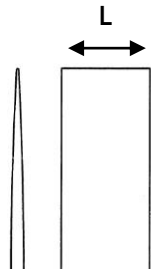
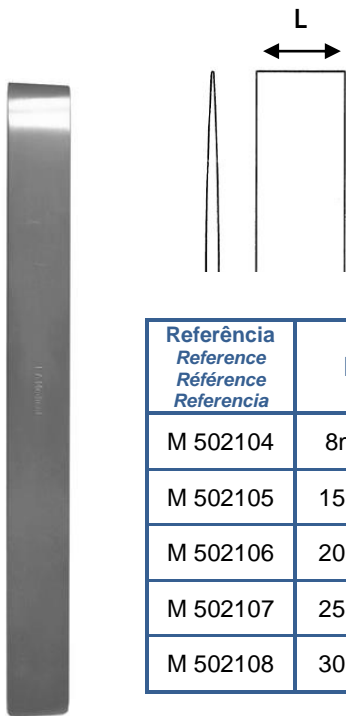
Referência Reference Référence Referencia	Peso Weight Poids Peso	Ø	Comprimento Length Longueur Largo
M 504052	900grs.	Ø45mm	25cm 9¾"
M 504053	750grs.	Ø40mm	25cm 9¾"
M 504054	450grs.	Ø35mm	25cm 9¾"



Referência Reference Référence Referencia	L	Comprimento Length Longueur Largo
M 502041	16mm	32,5cm 12¾"
M 502042	18mm	32,5cm 12¾"
M 502043	20m	32,5cm 12¾"

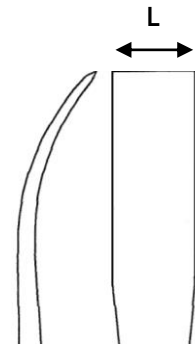
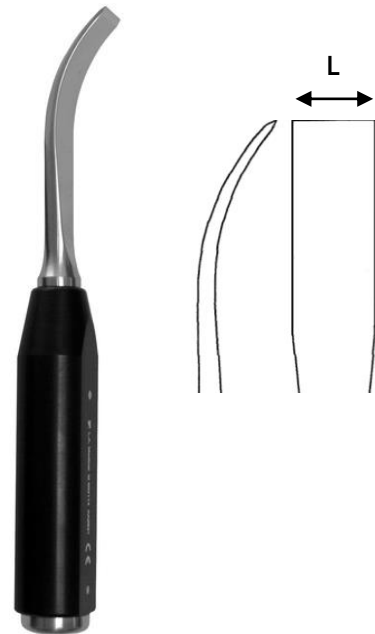


Referência Reference Référence Referencia	L	Comprimento Length Longueur Largo
M 502045	16mm	32cm 12¾"

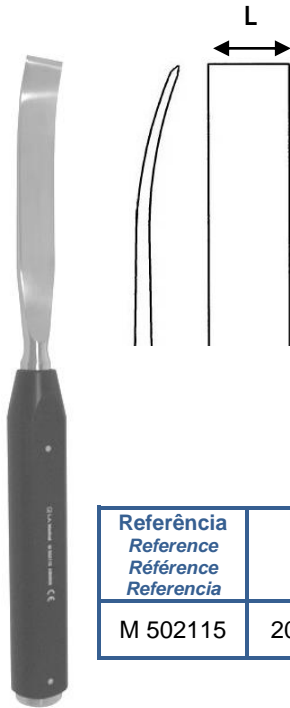


Referência Reference Référence Referencia	L	Comprimento Length Longueur Largo
M 502104	8mm	25cm 9¾"
M 502105	15mm	25cm 9¾"
M 502106	20mm	25cm 9¾"
M 502107	25mm	25cm 9¾"
M 502108	30mm	25cm 9¾"

Lambotte



Referência Reference Référence Referencia	L	Comprimento Length Longueur Largo
M 502114	20mm	22,5cm 8¾"



Referência Reference Référence Referencia	L	Comprimento Length Longueur Largo
M 502115	20mm	32,5cm 12 <sup>3</sup> / <sub>4</sub> "



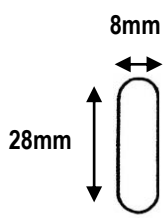
Referência Reference Référence Referencia	L	Comprimento Length Longueur Largo
M 503005	8mm	28cm 11"
M 505305	12mm	20cm 8"
M 505307	8mm	28cm 11"



Referência Reference Référence Referencia	L	Comprimento Length Longueur Longitud
M 505330	7,8mm	29cm 11 <sup>1</sup> / <sub>2</sub> "



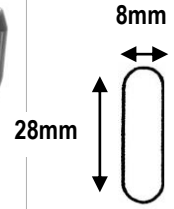
Referência Reference Référence Referencia	L	Comprimento Length Longueur Longitud
M 505332	7,8mm	29cm 11 <sup>1</sup> / <sub>2</sub> "



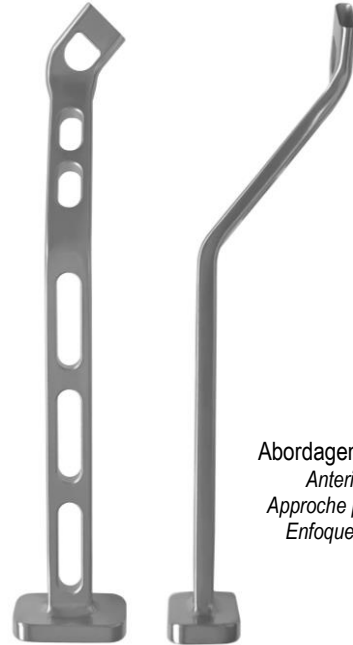
Abordagem anterior - direito  
Anterior approach - right  
Approche précédente - à droite  
Enfoque anterior - derecho



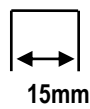
**Hunger**  
**M 506380**  
31cm 12¼"



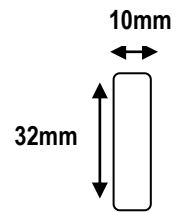
Abordagem anterior - esquerdo  
Anterior approach - left  
Approche précédente - à gauche  
Enfoque anterior - izquierda



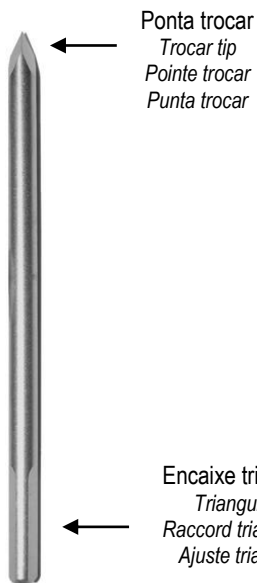
**Hunger**  
**M 506382**  
31cm 12¼"



**"U"**  
**M 504012**  
25cm 9¾"



**Moore**  
**M 506106**  
20cm 8"



Referência Reference Référence Referencia	Ø	Comprimento Length Longueur Longitud
M 504020	3,2mm	76,5mm
M 504021	3,2mm	60mm



Referência Reference Référence Referencia	Ø	Comprimento Length Longueur Longitud
M 504022	3,2mm	76,5mm
M 504023	3,2mm	100mm
M 504037	3,2mm	150mm



Referência Reference Référence Referencia	Ø pino Ø pin Ø épingle Ø alfileres	Ø Cabeça Ø head Ø tête Ø cabeza	Comprimento Length Longueur Longitud
M 504026	3.17mm	6.35mm	44.5mm



Pino longo  
Long pin  
Épingle longue  
Alfileres largo

Referência Reference Référence Referencia	Ø	Comprimento Length Longueur Longitud
M 504027	3,2mm	20cm 8"



← Ø 1

Pino duplo  
Double pin  
Épingle double  
Alfileres doble

← Ø 2

Referência Reference Référence Referencia	Ø 1	Ø 2	Comprimento Length Longueur Longitud
M 504028	3,2mm	6,35mm	57mm
M 504029	3,2mm	6,35mm	76,5mm



Cabeça cônica  
Conical head  
Tête conique  
Cabeza cónica

Referência Reference Référence Referencia	Ø	Comprimento Length Longueur Longitud
M 504025	3,2mm	31,5mm



Ponta trocar  
Trocar tip  
Pointe trocar  
Punta trocar

Cabeça hexagonal  
Hexagonal head  
Tête hexagonale  
Cabeza hexagonal

Referência Reference Référence Referencia	Ø	Comprimento Length Longueur Longitud
M 504030	3,2mm	55mm



Cabeça circular  
Circular head  
Tête circulaire  
Cabeza circular

Referência Reference Référence Referencia	Ø pino Ø pin Ø épingle Ø alfiler	Ø Cabeça Ø head Ø tête Ø cabeza	Comprimento Length Longueur Longitud
M 504031	3,0mm	6,8mm	58mm
M 504036	2,5mm	5mm	23,3mm



Ponta trocar  
Trocar tip  
Pointe trocar  
Punta trocar

**Freeman**  
**M 502057**  
11,5cm 4½"



Punho para pinos Freeman  
Handle for Freeman pins  
Poignée de goupille Freeman  
Mango de alfiler Freeman

**M 502055**  
12cm 4¾"





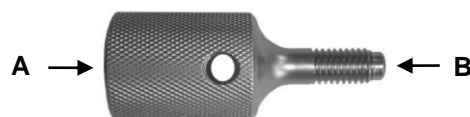
Referência Reference Référence Referencia	A	Comprimento Length Longueur Longitud
M 506023	Hudson	20cm 8"



Referência Reference Référence Referencia	A	B	Comprimento Length Longueur Longitud
M 506019	AO	Hudson	7,5cm 3"



Referência Reference Référence Referencia	A	B	Comprimento Length Longueur Longitud
M 506020	Hudson	AO	8cm 3¼"



Referência Reference Référence Referencia	A	B	Comprimento Length Longueur Longitud
M 502393	3/8-16	M10x1.5	7cm 2¾"



Referência Reference Référence Referencia	Ângulo da ponta Tip angle Angle point Ángulo punta	Abordagem Approach Approcher Acercarse
M 502275	150°	↑
M 502276	135°	↑
M 502278	150°	↓
M 502280	135°	↓

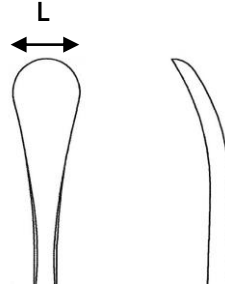


**M 502281**  
Ø10X125mm

**M 502388**  
Ø11X125mm

**M 502390**  
Ø12X150mm

**M 502391**  
Ø9.5X125mm



Referência Reference Référence Referencia	L	Comprimento Length Longueur Longitud
M 506100	19mm	31cm 12¼"
M 506102	27mm	34,5cm 13½"

**Cobb**



**M 504014**



Punção de haste  
Stem extractor  
Extracteur de tige  
Extractor de tallo

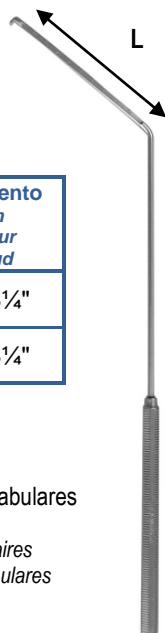
Ø6,8mm

Referência Reference Référence Referencia		Comprimento Length Longueur Longitud
M 502053	Curvo Curved Courbe Curvo	22cm 8¾"



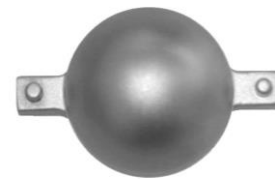
Punção de haste  
Stem extractor  
Extracteur de tige  
Extractor de tallo

Referência Reference Référence Referencia		Comprimento Length Longueur Longitud
M 502063	Curvo Curved Courbe Curvo	27,5cm 10¾"
M 502065	Reto Straight Droit Derecho	27,5cm 10¾"



Referência Reference Référence Referencia	L	Comprimento Length Longueur Longitud
M 502212	50mm	21cm 8¼"
M 502213	60mm	21cm 8¼"

Comparador profundidade - parafusos acetabulares  
Depth comparator - Acetabular Screws  
Compareur de profondeur - Vis acétabulaires  
Comparador de profundidad - tornillos acetabulares



Conexão para componente plástico  
Connection for plastic componente  
Connexion de composant en plastique  
Conexión de componentes de plástico

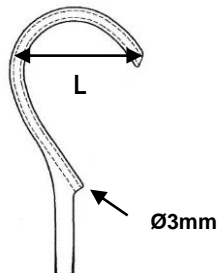
Referência Reference Référence Referencia	Rosca Thread Fil Rosca	Ø
M 502219	M10x1.5	Ø28mm

Ponta trocar  
Trocar tip  
Pointe trocar  
Punta trocar

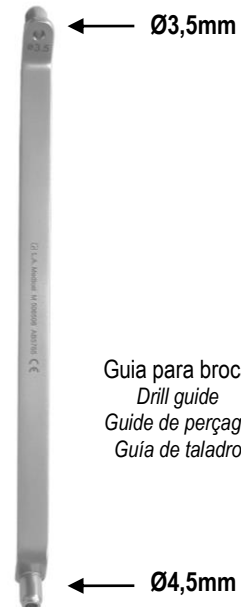


Punção perfurador da cavidade acetabular  
Puncture punch of the acetabular cavity  
Ponction perçant la cavité acétabulaire  
Perforación de la cavidad acetabular

**M 502768**  
21,5cm 8½"



Passa-fios  
Wire passer  
Passe fils  
Pasa cables



Guia para broca  
Drill guide  
Guide de perçage  
Guía de taladro

**M 506506**  
20cm 8"

Referência Reference Référence Referencia	L	Comprimento Length Longueur Longitud
M 505376	58mm	28,5cm 11¼"
M 505378	77mm	29,5cm 11½"



Referência Reference Référence Referencia	Ponta Tip Pointe Punta	Comprimento Length Longueur Longitud
M 502156	M5x0,8mm	42cm 16½"
M 502158	▲ 5°	42cm 16½"
M 502752	▲ 5°	31cm 12¼"
M 502753	∅3,5x6mm	31cm 12¼"
M 502754	▲ 5°	34cm 13½"
M 502756	1/4-20UNC	41,5cm 16¼"

Punho aplicador de restritores com cursor  
*Applicator handle for restrictor with cursor*  
*Poignée d'applicateur de restricteur avec curseur*  
*Mango aplicador restrictor con cursor*



Cânula simples  
Simple cannula  
Canule simple  
Cânula simple

**M 503800**  
15cm 6"



Apalpador  
Probe  
Palpeur  
Antena

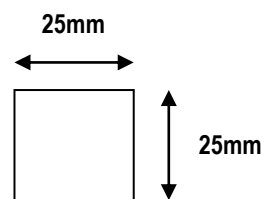
**M 504136**  
13cm 5"



← 12-24UNC

Punho para keel punch  
Handle for keel punch  
Poigné pour keel punch  
Mango para keel punch

**M 505362**  
15cm 6"



Cabeça para impactor  
Impactor head  
Tête à impacteur  
Cabeza al impactador

**M 504515**  
3,2cm 1¼"





**ÍNDICE**

**INDEX**

**INDICE**

**ÍNDICE**



<b>Afastadores</b> .....	1	<b>Lâminas destacáveis e punho</b> .....	39
<i>Retractors / Rétracteurs / Separadores</i>		<i>Detachable blades and handle / Lames amovíveis et poignée / Láminas desmontables y mango</i>	
<b>Afastadores / Elevadores de osso</b> .....	11	<b>Martelos</b> .....	40
<i>Retractors / Bone Levers / Rétracteurs / Écarteur à os / Separadores / Elevadores para huesos</i>		<i>Malets / Maillets / Martillos</i>	
<b>Aguihas dreno</b> .....	16	<b>Osteótomos</b> .....	41
<i>Drain needles / Aiguilles de vidange / Agujas de drenaje</i>		<i>Osteotomes / Ostéotomes / Osteótomos</i>	
<b>Cabeças para impactores</b> .....	17	<b>Pinos e cravos</b> .....	44
<i>Impactors heads / Têtes d'impacteurs / Cabezas impactadoras</i>		<i>Pins and nails / Épingles et clous / Alfileres y clavos</i>	
<b>Chaves de parafusos</b> .....	20	<b>Punhos manuais e adaptadores</b> .....	47
<i>Screw drivers / Tournevis / Destornillador</i>		<i>Hand grip and adaptors / Poignées et adaptateurs / Mangos y adaptadores</i>	
<b>Curetas para osso</b> .....	21	<b>Punhos de raspas femorais</b> .....	48
<i>Bone curettes / Curettes à os / Cucharillas para huesos</i>		<i>Femoral rasps handles / Poignés pour tiges fémorales / Puños para vástagos femorales</i>	
<b>Dissetores</b> .....	23	<b>Roginas</b> .....	49
<i>Dissectors / Dissecteurs / Disectores</i>		<i>Raspatories / Rugines / Legras</i>	
<b>Escopros</b> .....	24	<b>Suporte inclinado para joelho</b> .....	50
<i>Chisels / Ciseaux / Escoplos</i>		<i>Inclined knee support / Inclineur de Genou / Soporte de rodilla inclinado</i>	
<b>Estribos</b> .....	26	<b>Vários instrumentos para anca</b> .....	51
<i>Traction bow / Arc de traction / Arco de tracción</i>		<i>Various instruments for hip / Divers instruments pour la hanche / Varios instrumentos para la cadera</i>	
<b>Extratores</b> .....	27	<b>Vários instrumentos para joelho</b> .....	54
<i>Extractors / Extracteurs / Extractores</i>		<i>Various instruments for knee / Divers instruments pou le genou / Varios instrumentos para la rodilla</i>	
<b>Fios Guia</b> .....	29		
<i>Guide pins / Tige-guide / Varilla de guía</i>			
<b>Goivas</b> .....	30		
<i>Gouges / Gouges / Gubias</i>			
<b>Impactores</b> .....	31		
<i>Impactors / Impacteurs / Impactadores</i>			
<b>Instrumentos para acetábulos</b> .....	35		
<i>Acetabular instruments / Instruments acétabulaires / Instrumentos acetabulares</i>			
<b>Instrumentos mini-invasivos pé</b> .....	37		
<i>Mini-invasive foot instruments / Mini instruments invasifs pour les pieds / Instrumentos mini-invasivos de pie</i>			
<b>Instrumentos para rótula</b> .....	38		
<i>Knee-cap instruments / Instruments pour la rotule / Instrumentos para la rótula</i>			





**L.A. Medical – Fabricantes de Instrumentos Cirúrgicos, Lda.**

Zona Industrial – Arruamento D, Lote 42  
3850-184 Albergaria – a – Velha Portugal

Tel.: (+351) 234 529 790

Fax.: (+351) 234 529 799

e-mail: [lamedical@lamedical.pt](mailto:lamedical@lamedical.pt)

url: [www.lamedical.pt](http://www.lamedical.pt)

